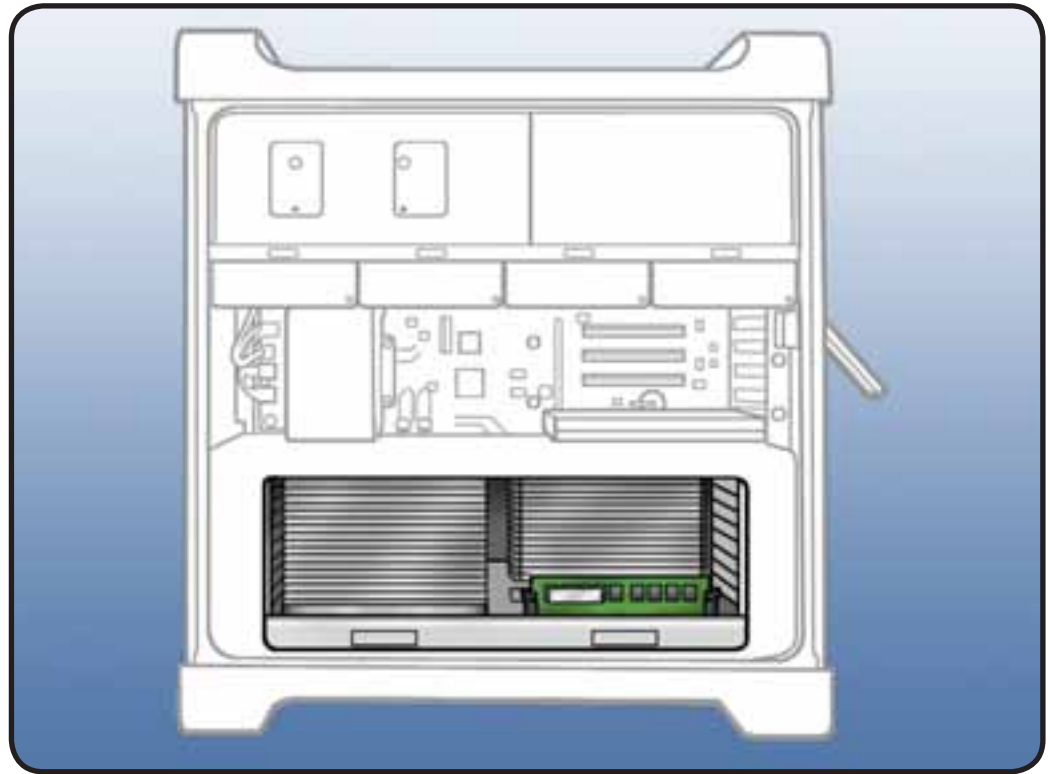




Processor Tray

First Steps

Open computer and lay it down with access side facing up.



Note: Processor tray includes processor heatsink(s), processor(s), DIMMs, processor board, and processor tray support plate.

Tools

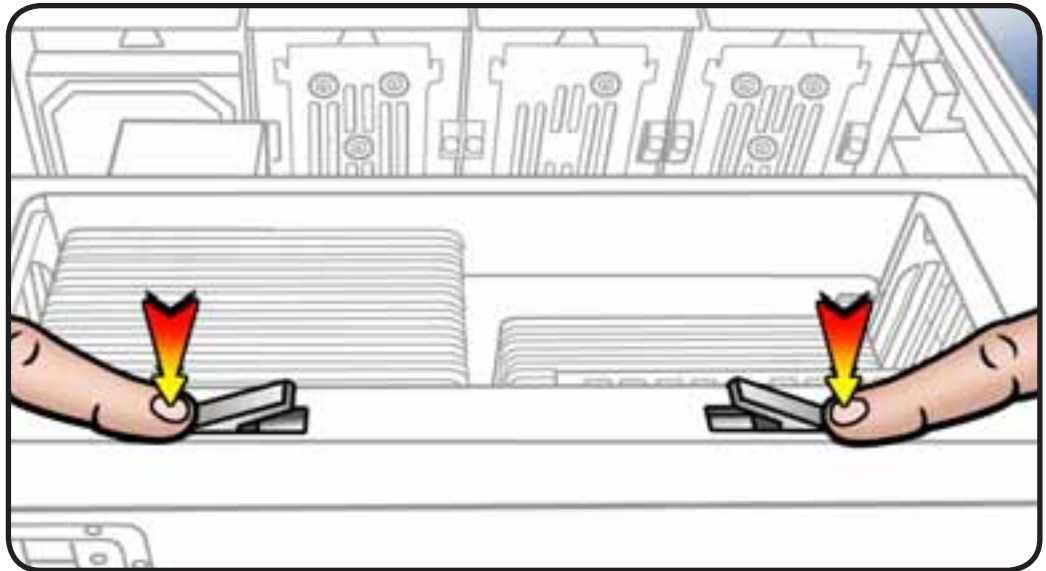
- ESD wrist strap
- Soft, clean cloth





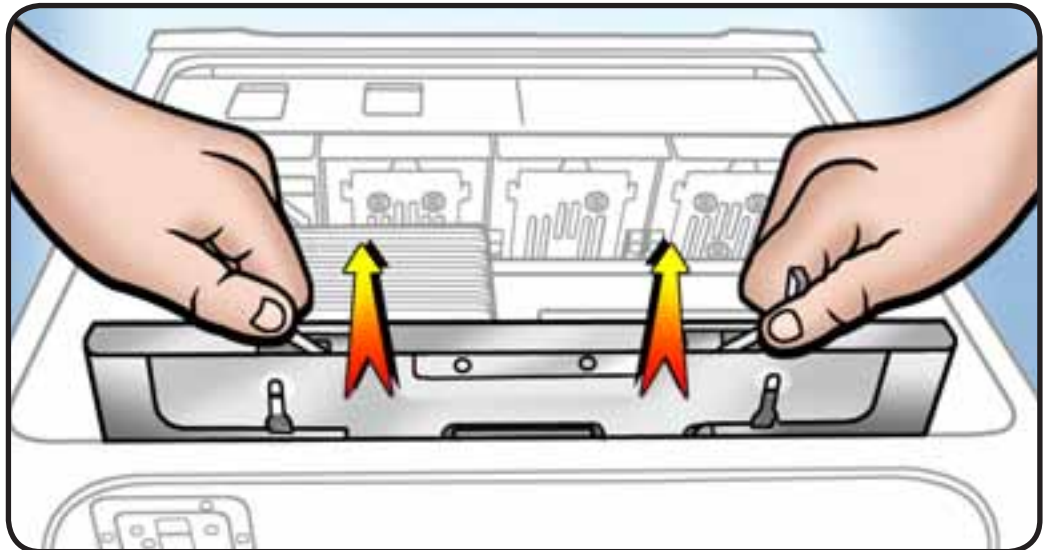
Removal

- 1 Press down and release 2 latches on front of processor tray.



- 2 Holding tray by latches, lift it out of computer.

- 3 Place tray DIMM side up on soft, clean cloth.





AirPort Extreme Card

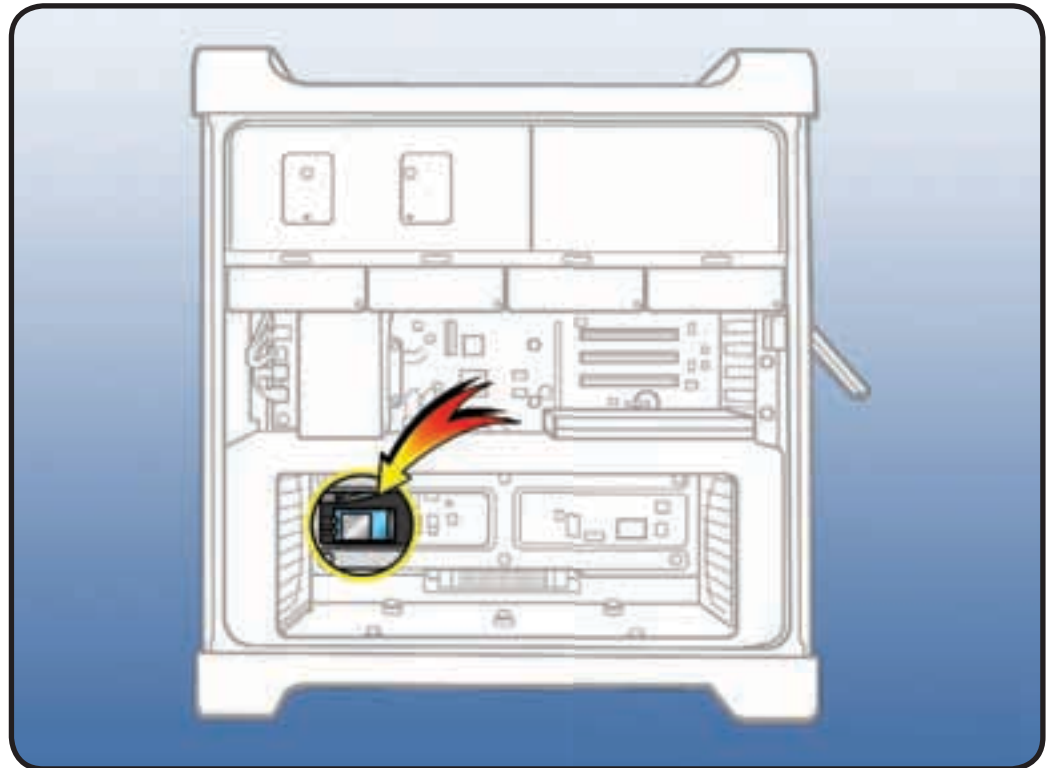
First Steps

Open computer, lay it down with access side facing up, and remove:

- [Processor tray](#)

Important: Enclosure includes **3** AirPort antenna wires and **1** Bluetooth antenna wire. Wires look similar, except Bluetooth wire includes “BT” label. For proper operation, do not connect Bluetooth antenna wire to AirPort card or any AirPort wire to Bluetooth card.

Note: Connect AirPort antenna wires labeled #1 and #3 to AirPort card. (You may connect either of these wires to either AirPort connector.) The third wire, #2, is not used for this AirPort card.



Tools

- ESD wrist strap
- Jeweler's Phillips #1 screwdriver

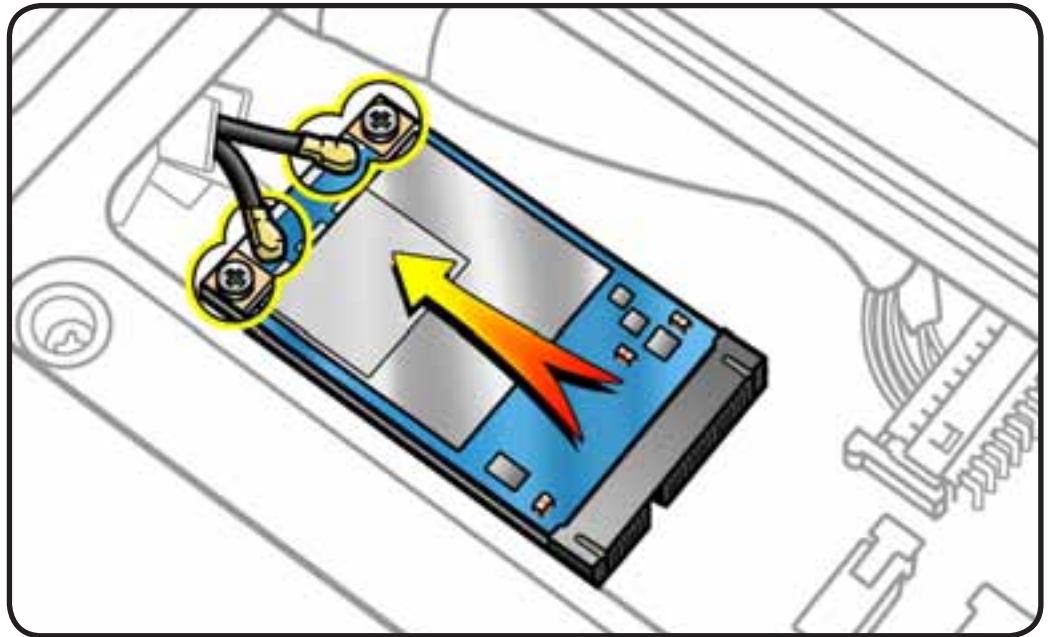




Removal

- 1 Disconnect 2 antenna wires.
- 2 Remove 2 screws.
- 3 Slide card out of connector and remove card from computer.

Note: If you are not replacing AirPort card, cover connectors on AirPort antenna wires with Kapton or other non-conductive tape to prevent wires from shorting out components on processor board or backplane board.





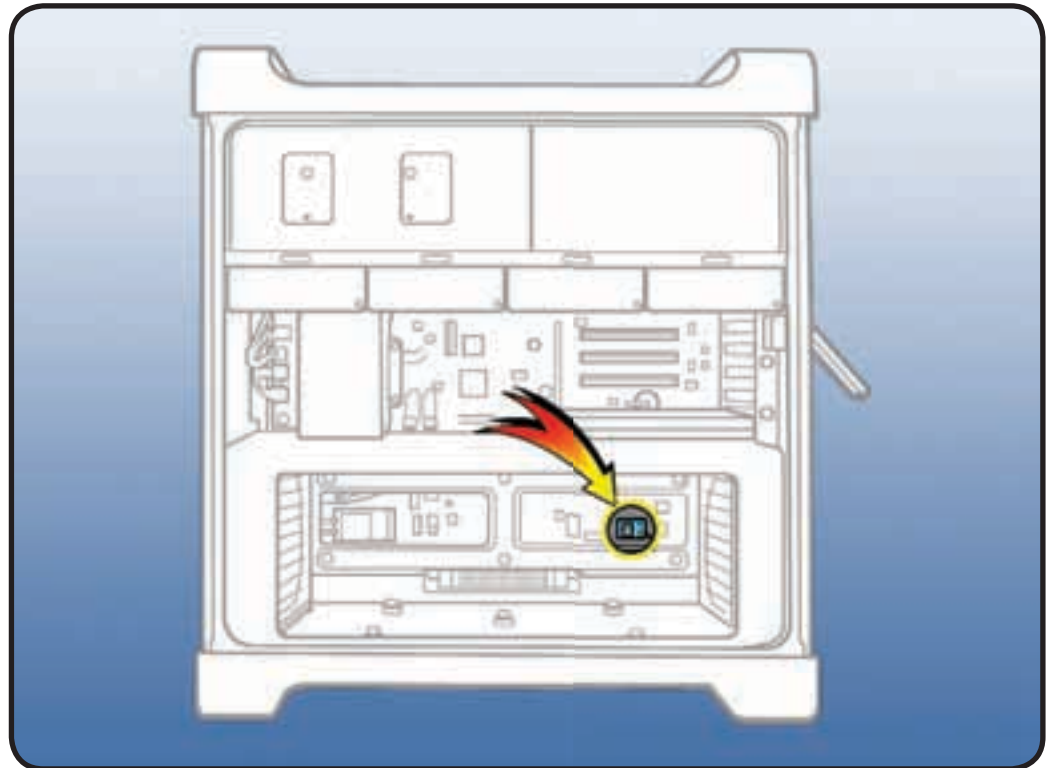
Bluetooth Card

First Steps

Open computer, lay it down with access side facing up, and remove:

- [Processor tray](#)

Important: Enclosure includes **3** AirPort antenna wires and **1** Bluetooth antenna wire. Wires look similar, except Bluetooth wire includes “BT” label. For proper operation, do not connect Bluetooth antenna wire to AirPort card or any AirPort wire to Bluetooth card.



Tools

- ESD wrist strap
- Jeweler's Phillips #0 screwdriver

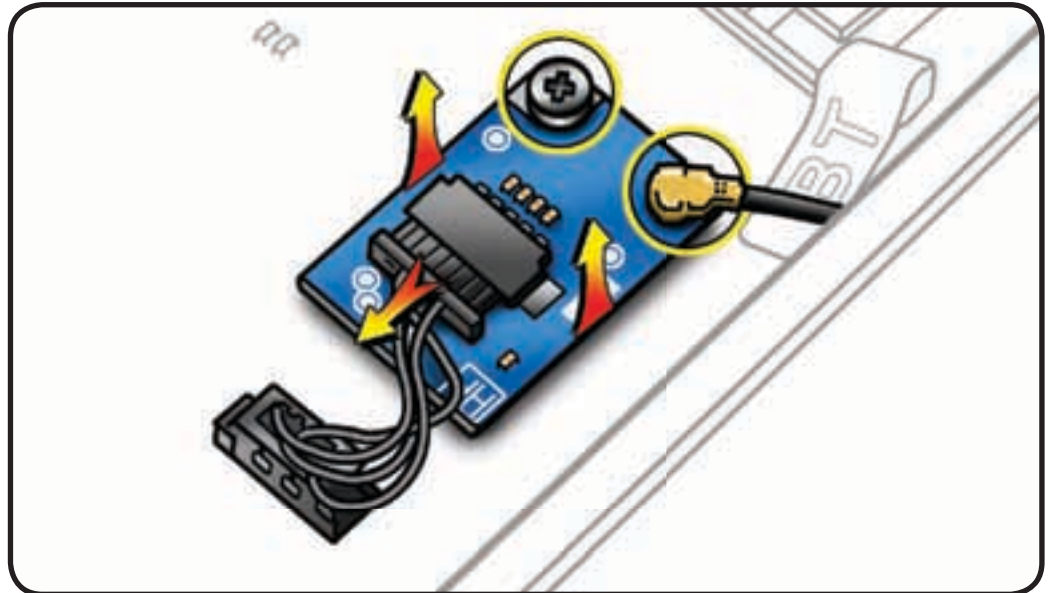




Removal

- 1 Disconnect Bluetooth cable from card.
- 2 Disconnect antenna wire from card.
- 3 Remove screw.
- 4 Lift card out of computer.

Note: You may need to lift firmly. Card is connected by adhesive foam pad below it. Adhesive and pad may be reused if you reinstall the card.



- 5 If you are replacing Bluetooth-to-backplane-board cable, disconnect cable from backplane and remove from computer.

Important: If you are not replacing Bluetooth card, cover connector on Bluetooth antenna wire with Kapton or other non-conductive tape to prevent wire from shorting out components on processor board or backplane board.

