



Power Supply

Tools

The only tool required for this procedure is a short-handled, magnetized 2.5 mm hex screwdriver. You may also find a flat-blade screwdriver helpful in releasing some cable connectors.

Preliminary Steps

Before you begin, open the computer, lay it on its side with the access side facing up, and remove the following:

- Hard drives and hard drive carriers in drive bays 3 and 4
- Optical drive carrier and optical drives
- Any PCI Express cards that block access to the power supply mounting screws

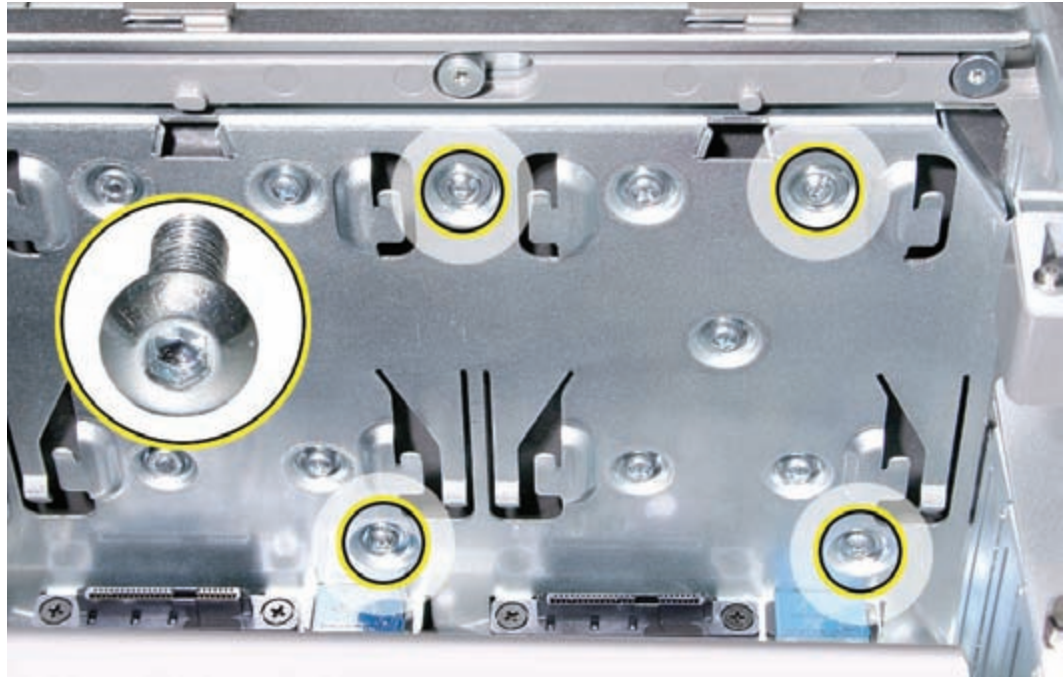
Part Location



Procedure

Removing the Power Supply

1. Using a short-handled, magnetized 2.5 mm hex screwdriver, remove the four power supply mounting screws from the bottom of the media shelf.



2. Depress the upper right corner of the power supply and slide the power supply toward the front of the computer.



Note: Before beginning the next step, place a soft cloth over the edge of the enclosure to prevent scratches from the power supply.

3. Lift the power supply a short distance and rest it on the edge of the enclosure.

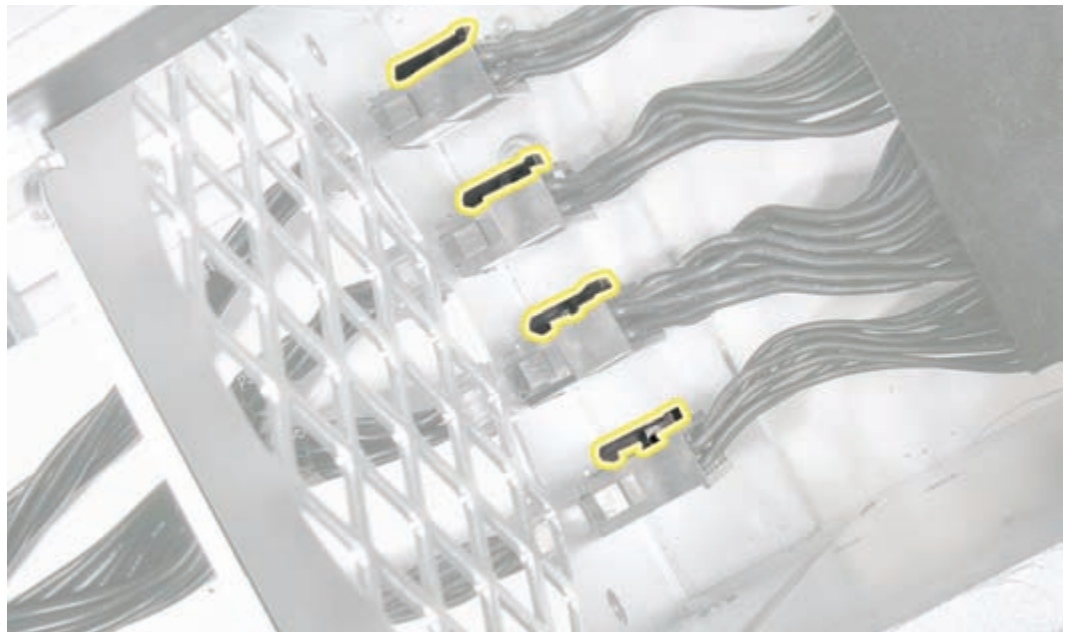


Note: The power supply is still connected to the enclosure by its cable. To remove the power supply entirely from the enclosure, you must disconnect the power supply cable's four connectors, which mate with four power harness connectors threaded through openings in the media shelf's vertical divider.

4. Starting with the top connector and working down, disconnect the four connectors on the power supply cable from the four connectors on the power harness cable.



Note: You must release the locking latch on each power supply cable connector before detaching the connector.



5. Remove the power supply from the enclosure.

Replacing the Power Supply

Note: To protect against scratches, make sure a soft cloth covers the edge of the enclosure next to the power supply bay.

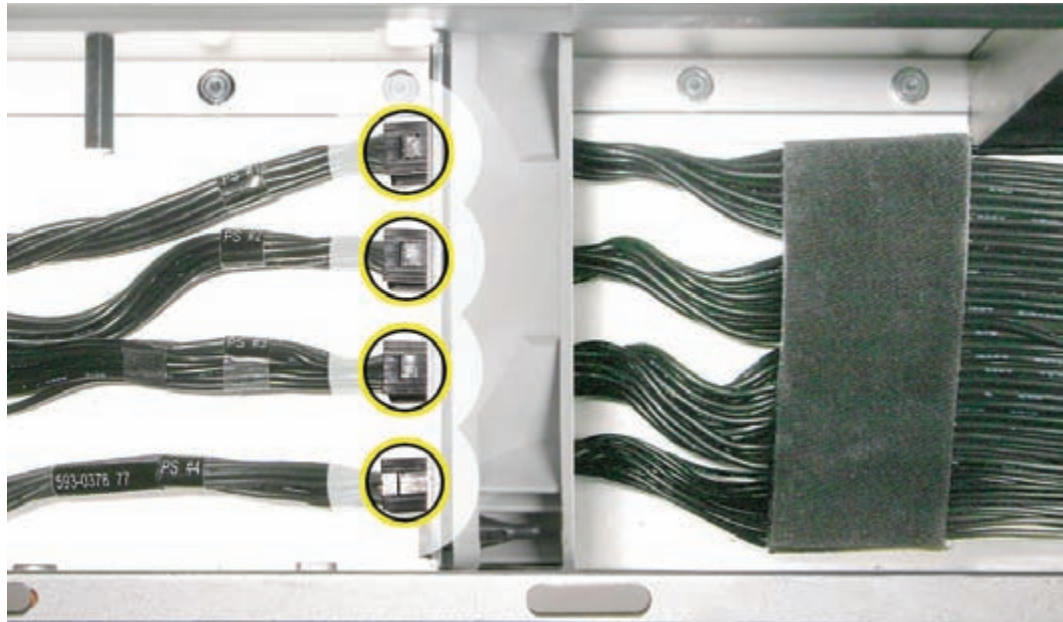
1. Rest the power supply on the edge of the enclosure so that its cable can reach the media shelf divider.



Note: The following four steps explain how to reconnect the power supply cable connectors with the power harness connectors. When the power harness connectors are in their original position in the media shelf divider, it is not possible to see where they mate with the power supply cable connectors. Therefore, the next step shows how to temporarily remove the power harness connectors from the divider for a better line of sight.

2. Starting with the top connector and working down, release the four power harness cable connectors from their openings in the media shelf divider.

Note: Each connector has two locking latches that hold it to the divider. To release the connector, depress the bottom latch first and then the top latch. You may find a flat-blade screwdriver useful in depressing the latches.



3. Placing a hand on either side of the media shelf divider, thread the J1 connector on the power supply cable through the top connector opening in the media shelf divider and connect it to the PS1 connector on the power harness.



Repeat for the other three power supply cable connectors.

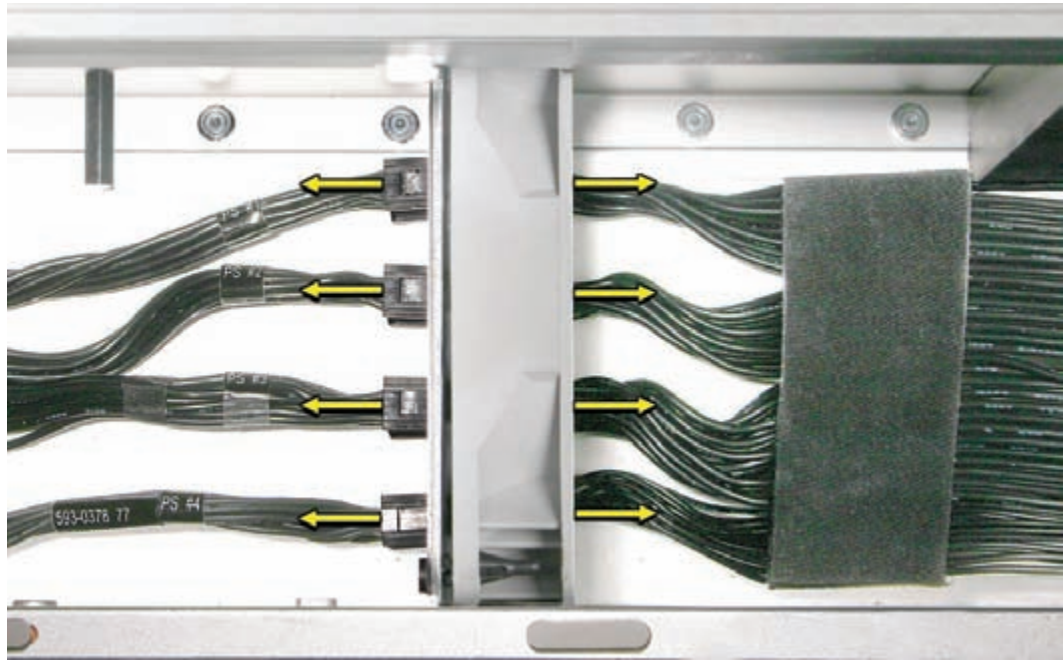
4. **Important:** The first three connectors on the power supply cable are marked J1, J2, and J3; the fourth connector is not marked. The four connectors on the power harness cable are marked PS1, PS2, PS3, and PS4. You must connect J1 to PS1, J2 to PS2, etc.



5. Starting at the bottom connector and working up, depress the locking latches on each power harness connector and reinsert it into its opening in the media shelf divider.



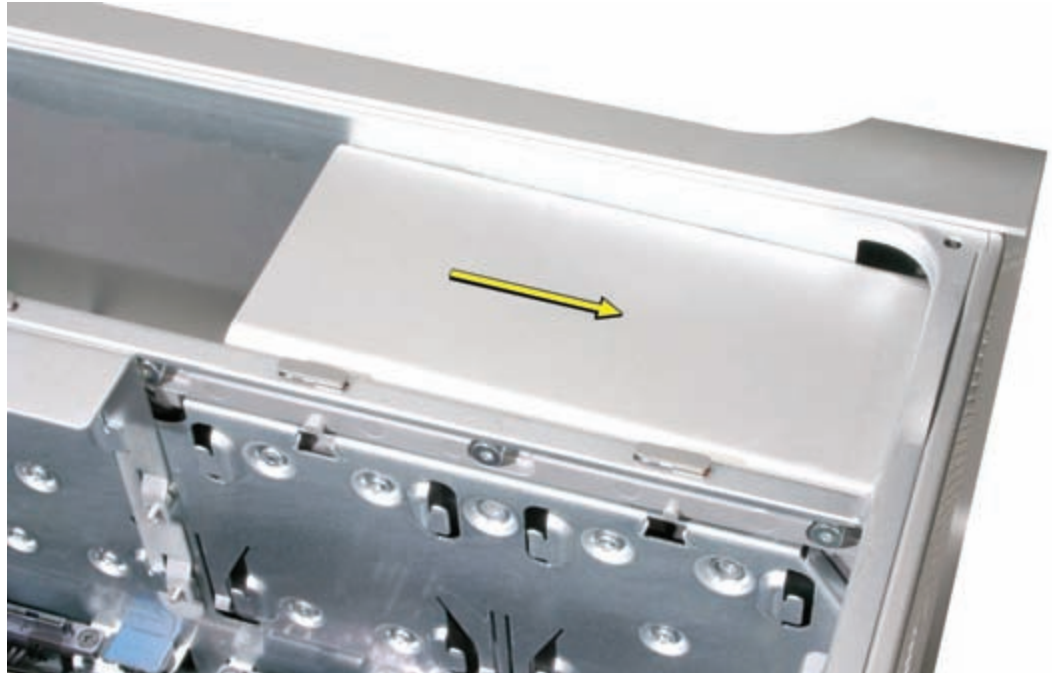
Important: Test that all power supply cable connectors and power harness connectors are fully seated by tugging on the cables on both sides of each of the four paired connectors.



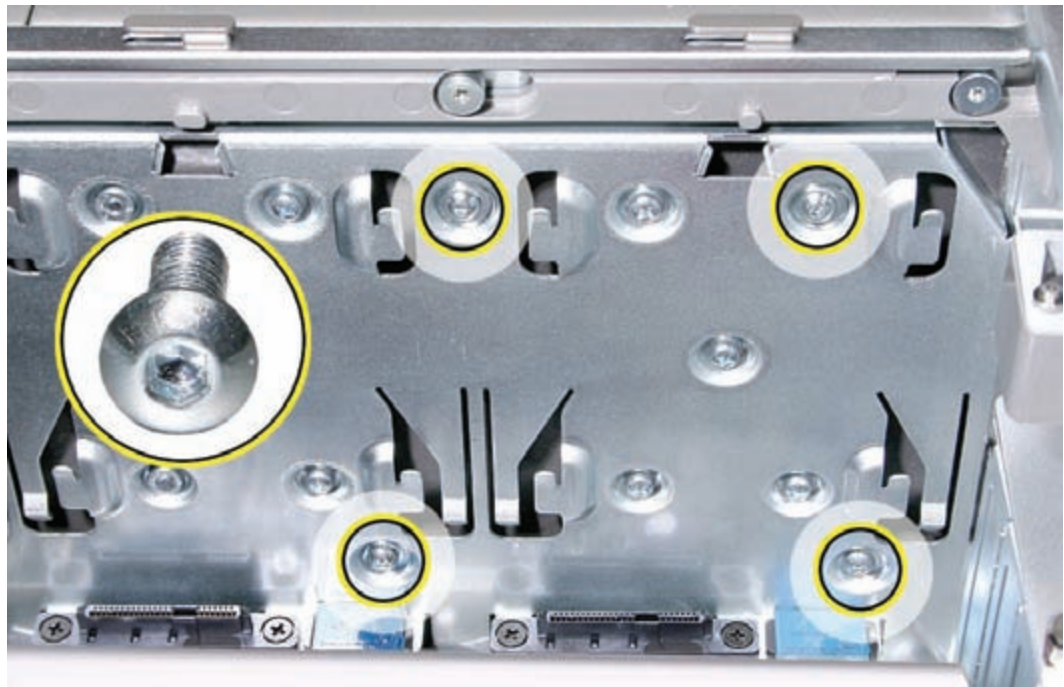
6. Fold the power supply cable on the bottom of the power supply bay.
7. Lift the power supply and remove the soft cloth from the edge of the enclosure.
8. Holding the power supply at an angle, as illustrated, lower it into the enclosure until its upper right corner slides under the corner lip of the enclosure.



9. Slide the power supply toward the back of the computer as far as possible.



10. Make sure the power receptacle aligns with the opening in the enclosure's back panel and the four screw holes in the power supply align with the screw holes in the media shelf.
11. Replace the four power supply mounting screws.





Power Supply Fan

Tools

The only tools required for this procedure are a short-handled, magnetized 2.5 mm hex screwdriver and needlenose pliers. You may also find scissors or wire cutters helpful.

Preliminary Steps

Before you begin, open the computer, lay it on its side with the access side facing up, and remove the following:

- Hard drives and hard drive carriers in drive bays 3 and 4
- Optical drive carrier and optical drives
- Any PCI Express cards that block access to the power supply mounting screws

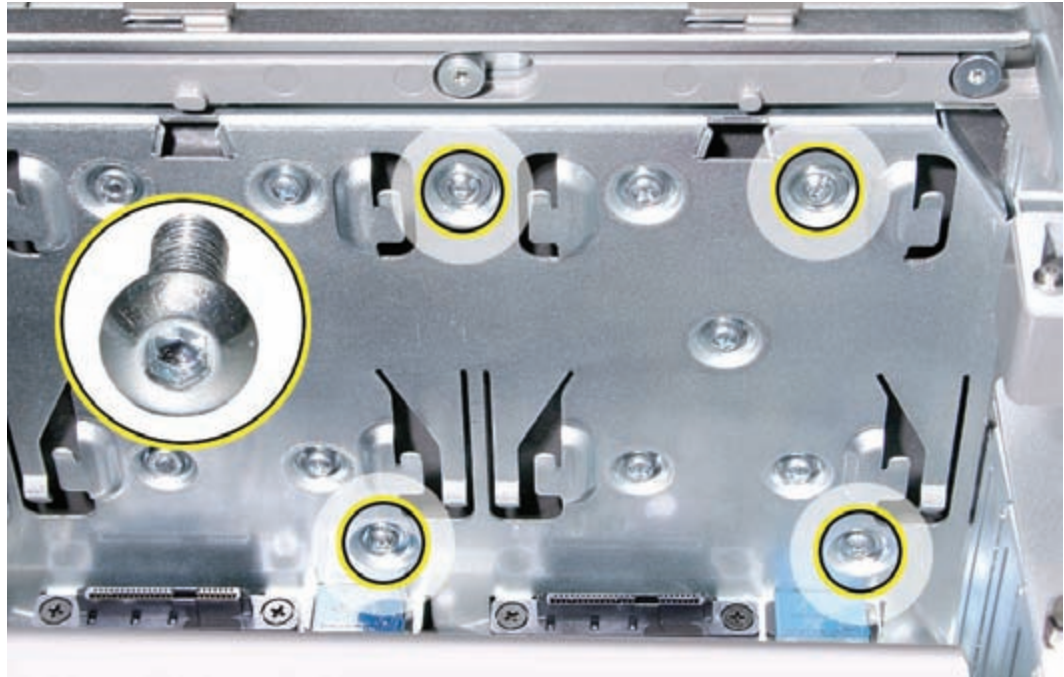
Part Location



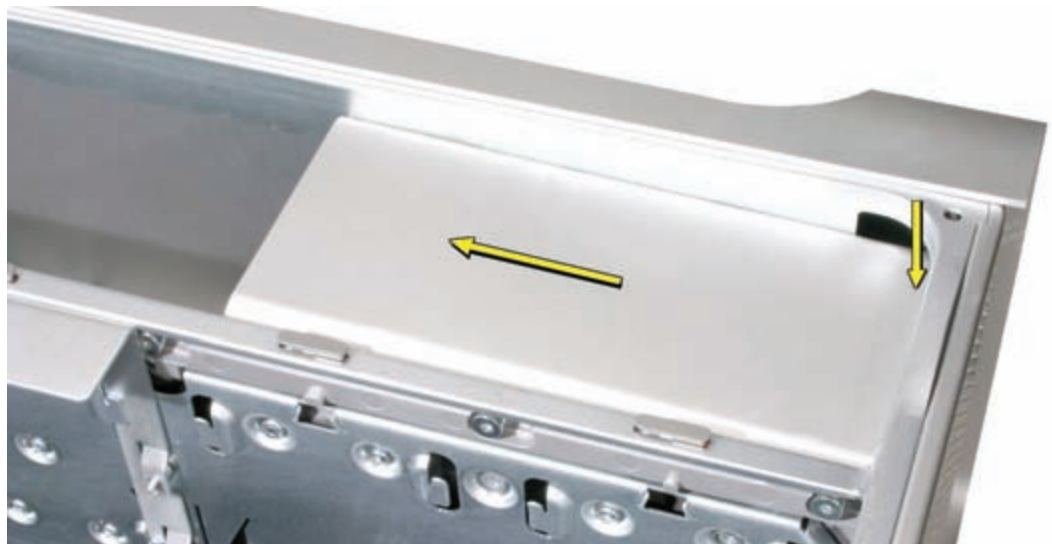
Procedure

Note: To remove the power supply fan, you must first move the power supply out of the way; you do not, however, have to remove the power supply entirely from the enclosure.

1. Using a short-handled, magnetized 2.5 mm hex screwdriver, remove the four power supply mounting screws from the bottom of the media shelf.



2. Depress the upper right corner of the power supply and slide the power supply toward the front of the computer.



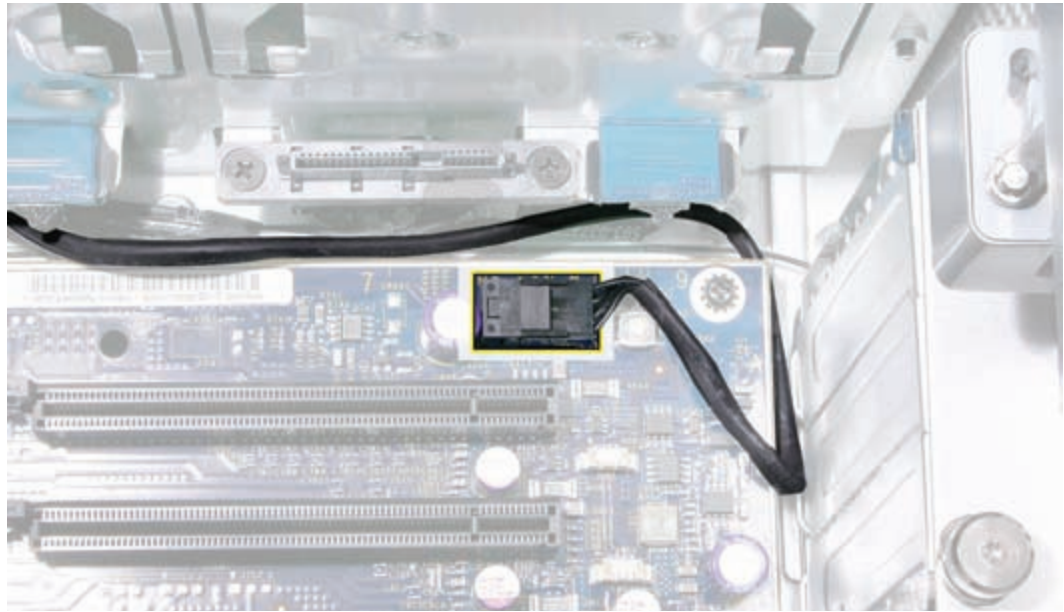
Note: Before beginning the next step, place a soft cloth over the edge of the enclosure to prevent scratches from the power supply.

3. Lift the power supply a short distance and rest it on the edge of the enclosure.



Note: The power supply is still connected to the enclosure by its cable. When moving the power supply to the edge of the enclosure, be careful not to put too much tension on the cable.

4. Disconnect the power supply fan cable from the logic board and thread the cable through the opening in the media shelf.

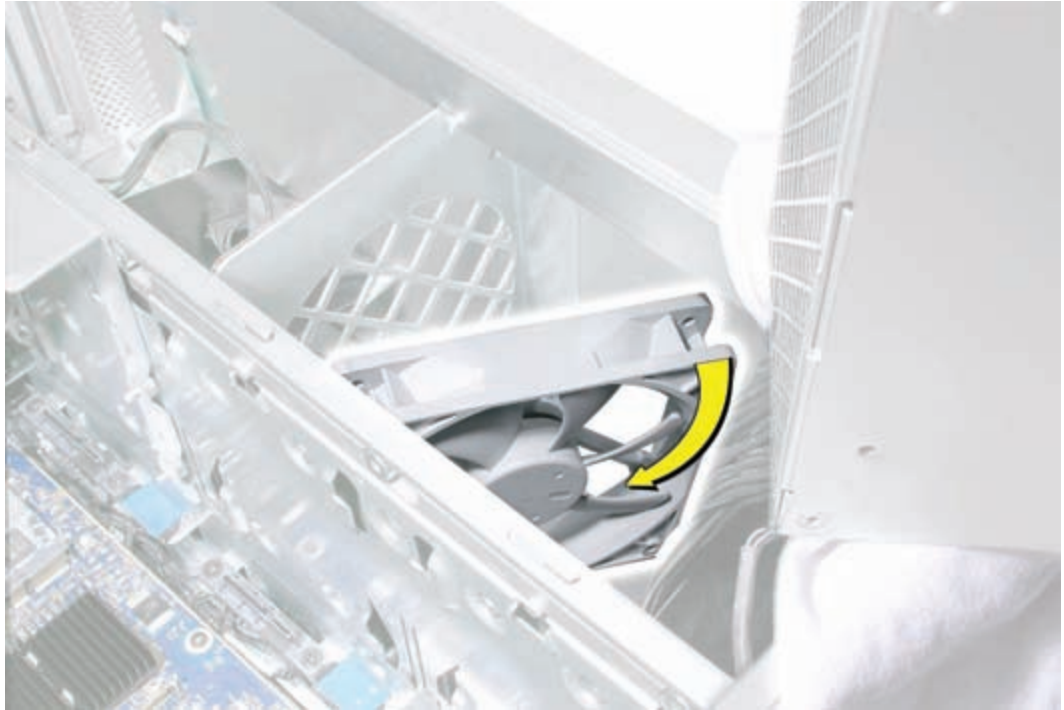


5. Using needlenose pliers, pull out the four grommets that mount the power supply fan to the media shelf divider.

Note: You may find scissors or wire cutters useful in snipping off the grommet heads.



-
6. Rotate the fan and remove it from the enclosure.



Replacing the Power Supply Fan

1. Place the power supply fan in the media shelf and thread the fan's cable through the opening in the shelf.
2. Connect the cable to the logic board.
3. Rotate the fan into place flush against the media shelf divider. Make sure the back of the fan faces the divider, as illustrated.



Note: To secure the power supply fan to the divider, use the long-tailed grommets enclosed with the replacement fan.

4. Thread the first grommet, tail first, through one of the four grommet holes in the divider and on through the corresponding grommet hole in the fan bracket. Then pull to secure the grommet and detach the excess threading tail. (The tail is notched to break off at the correct place.)
5. Repeat for the other three grommets.



-
6. Fold the power supply cable on the bottom of the power supply bay.
 7. Holding the power supply at an angle, as illustrated, lower it into the enclosure until its upper right corner slides under the corner lip of the enclosure.



8. Slide the power supply toward the back of the computer as far as possible.



9. Make sure the power receptacle aligns with the opening in the enclosure's back panel and the four screw holes in the power supply align with the screw holes in the media shelf.
10. Replace the four power supply mounting screws.

