



Antenna, Wireless

Tools

This procedure requires the following tools:

- Torx-8 screwdriver

Part Location



Preliminary Steps

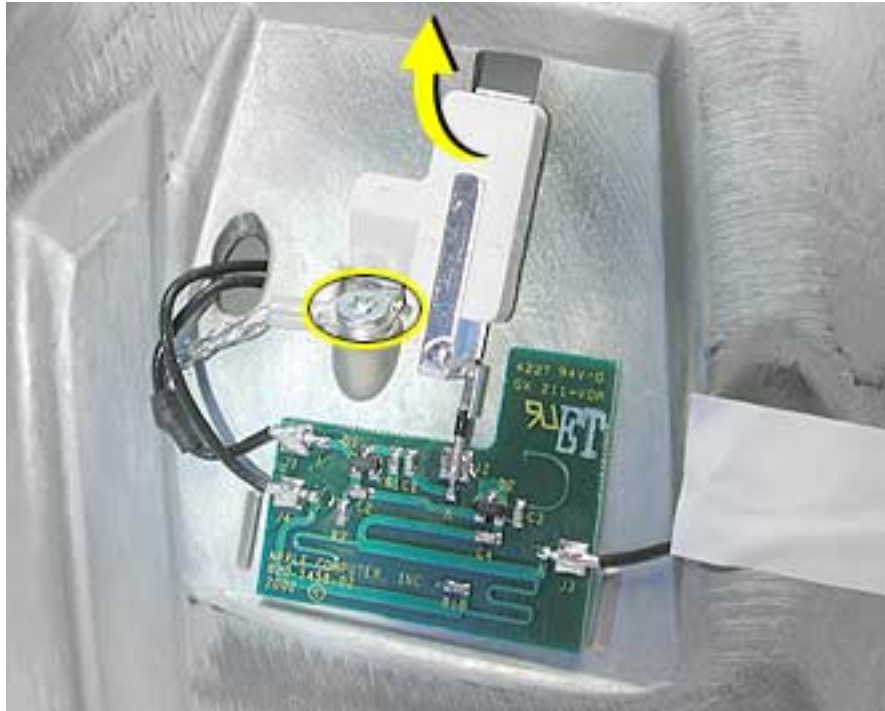
Before you begin, do the following:

- Position the computer in the service stand.
- Remove the user access plate.
- Remove the bottom housing.
- Remove the drive carrier assembly.
- Remove the power supply.
- Remove the power supply insulators.
- Remove the optical drive door.
- Remove the internal speaker.
- Remove the fan.

-
- Remove the fan bracket under the fan.
 - Remove the neck spoke retainer cap.
 - Remove the blind mate connector screws.
 - Remove the Faraday cage.

Procedure

1. Remove the mounting screw and unclip the board from the Faraday cage. Remove any tape, and carefully separate the antenna board cable from the Faraday cage.



2. Remove the second mounting screw to unclip the antenna from the Faraday cage.



Replacing the AirPort Antenna

Procedure

1. Attach the replacement antenna to the outside of the Faraday cage. Feed the antenna wires through the Faraday cage and position the wires against the Faraday cage (as shown). **Note:** Make certain the wires lay flat against the Faraday cage.



2. Feed the antenna wires through the hole in the Faraday cage and position the wires against the Faraday cage (as shown). Make sure that the wires lay flat against the inside of the Faraday cage.



3. Place the copper tape over the wires making sure the wires lay flat. Press the copper tape securely against the Faraday cage.



4. Reassemble the computer and return the system to the customer.

Warning: Whenever the bottom housing is opened for service, you must do two things:

1. You must clean the original thermal film from all thermal interface mating surfaces, and reapply thermal paste to the mating surfaces on the thermal pipe.

2. You must tighten the four torx screws on the bottom housing to a minimum of 17 in.-lbs. Use a torque driver (service tool 076-0899) to ensure that the thermal pipe is firmly mated with the top base. If you do not have a torque driver, you must make sure the screws are tightened by hand **FIRMLY, BUT NOT FORCIBLY.**

Failure to follow these steps could cause the computer to overheat and damage internal components.

Refer to the topic “Thermal Paste Application” for detailed information.